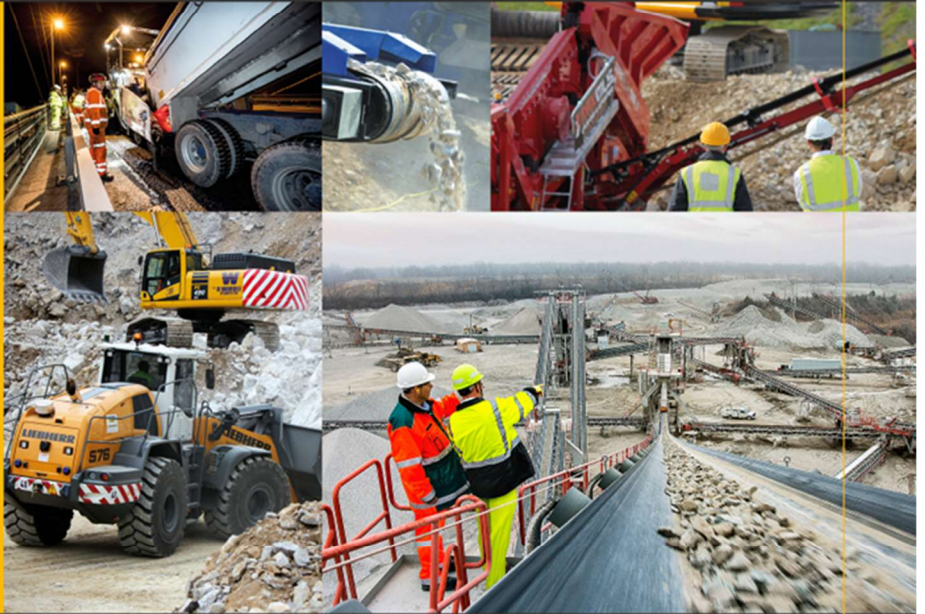


Estimated Movement of Aggregates to Rail Depots (2024) in Great Britain 2026



For more information contact:

BDS Marketing Research (QMJ) Limited
7 Regent Street, Nottingham,
NG1 5BS, United Kingdom
Tel: +44 (0) 1761 433035
Website: www.bdsmarketing.co.uk

VAT Reg. No. 244432327
Registered in England No. 10208753

SAMPLE Report





No part of this report may be reproduced, stored in a retrieval system in any form or by any means, electric, mechanical, photocopying, recording or otherwise, without prior written permission of BDS Marketing Research (QMJ) Limited, except for use within the company subscribing to the report.

Every possible precaution has been taken to ensure that the information in this report is accurate at the time of going to press. BDS Marketing Research (QMJ) Limited cannot accept responsibility for any loss or damage, including consequential loss, arising from this report.

The data provided has been obtained and collated from a number of sources; these could include but are not limited to planning records, primary research with operating companies, industry journals, newsfeeds, company and industry websites and existing BDS databases, built up over more than 30 years.

Version Control

SAMPLE REPORT

CONTENTS

1 EXECUTIVE SUMMARY	3
2 REPORT OVERVIEW	4
2.1. Background & Purpose	5
2.2. BDS Market Intelligence	5
3 RAIL DEPOT GB MARKET ANALYSIS	6
3.1. Market Overview	6
3.1.1. Company Activity	8
3.2. Plant & Company Activity	9
3.2.1. Joint Ventures	9
3.2.2. Ceased Operation	9
3.2.3. New Operations	9
3.2.1. Company Acquisitions / Administration	10
4 MARKET SHARE ANALYSIS	11
5 SECTOR MARKET PROSPECTS	13
5.1. 2024/2025 Government Support	13
5.2. Industry News (2025)	14
5.3. Key Rail Projects (2025)	15
5.4. Operator collaboration and workings	17
6 PLANNING ACTIVITY (LAST 11 MONTHS)	18
7 DATA TABLES	19

Appendices

Appendix A. Data tables to provide Estimated Movement of Aggregates to Rail Depots in Great Britain